

Protocol converter ID003 to ID024 (Netplex).

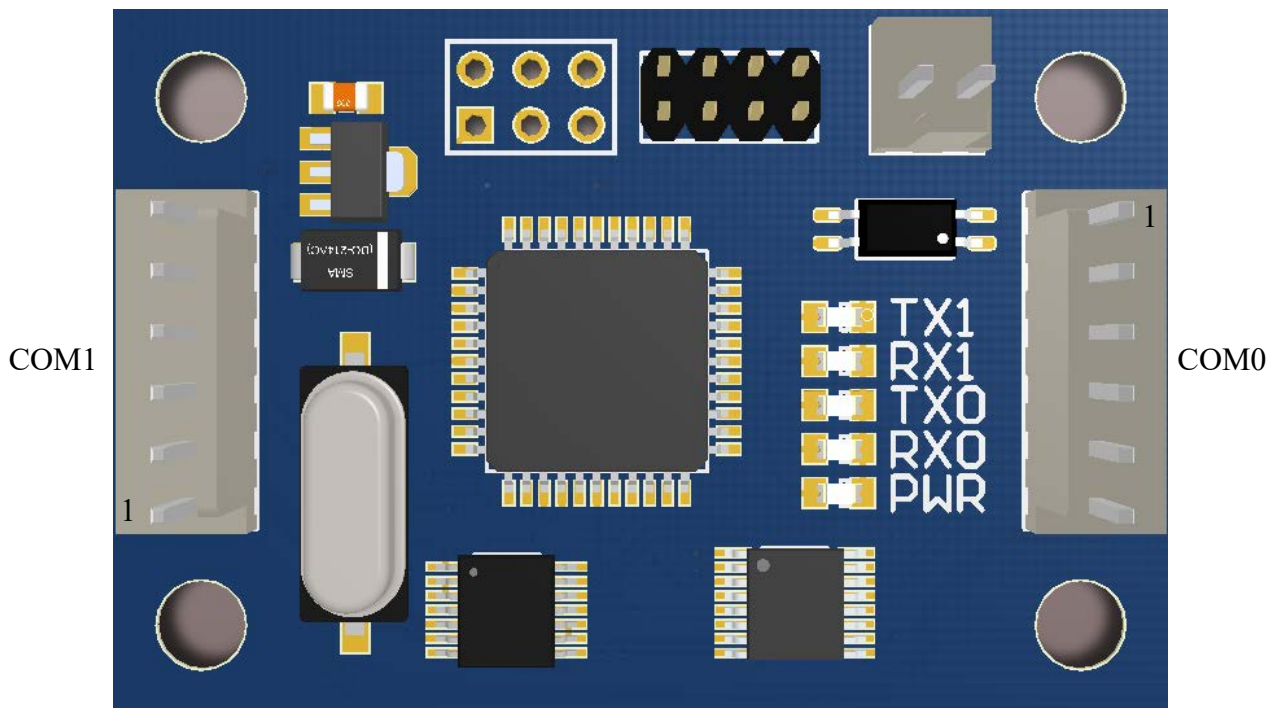
This board may be used to connect JCM bill acceptors **EBA-1x, EBA-2x, EBA-3x, UBA-1x*, WBA-1x, WBA-2x** and CashCode bill acceptors **MFL Series (optical interface), MSM Series** и **MVU Series** to IGT gaming machines supporting ID024 (Netplex) protocol.

Connection

Connect bill acceptors to COM1. See Pic.1:

| Connector COM1: | EBA-1x/2x: | EBA-3x: | UBA-1x*, WBA-2x: | WBA-1x, MFL: | MSM, MVU: |
|---------------------|------------|------------|------------------|--------------|----------------------|
| 1 +12V | 1,3 | 1,3 | 1,5 | 1,3 | 1(Power) |
| 2 GND | 2,4 | 2,4 | 2,7,13 | 4,7 | 2(Power) |
| 3 TX to BA | 25 | 5 | 4 | 8 | 11(Interface) |
| 4 RX from BA | 26 | 7 | 6 | 9 | 16(Interface) |

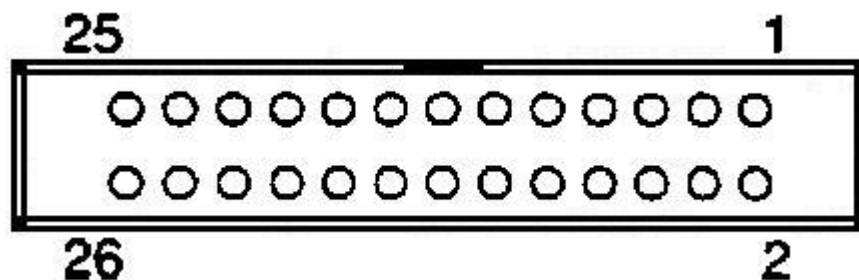
***NOTE:** when connecting UBA-10/11/12 select optically isolated interface type using jumpers on the UBA CPU board (see JCM UBA-1x Series Manual).



All output lines are OC (+12V max.).
All input lines have pull-up resistors to +5 V.

Pic. 1.

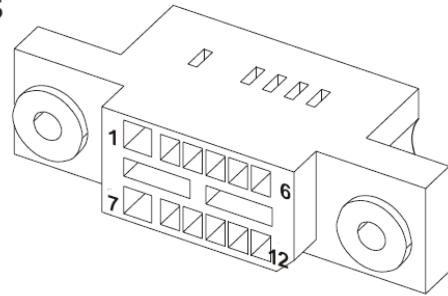
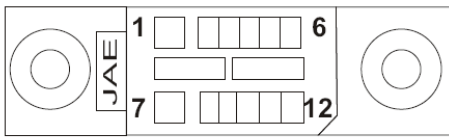
Connector EBA-1x/2x (when looking at bill acceptor):



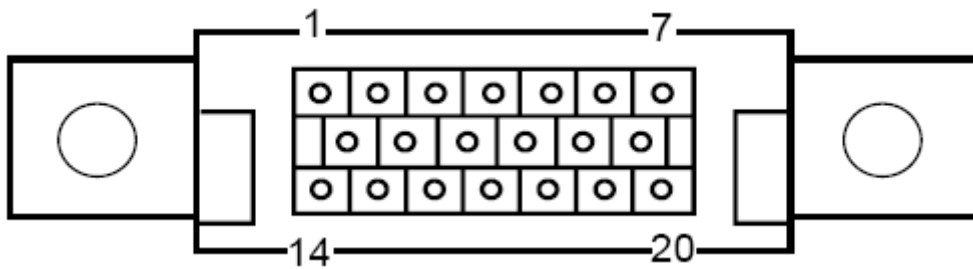
Connector WBA-1x, MFL Series:

Figure 3

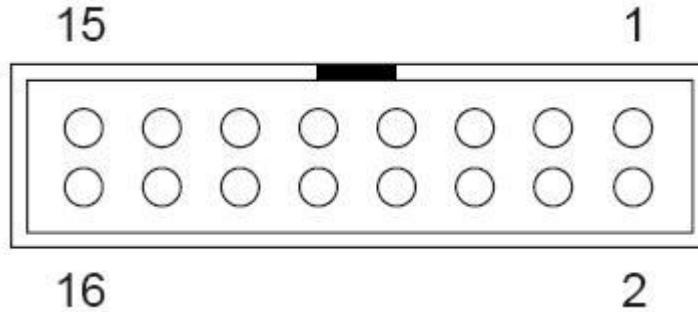
TOP VIEW
JAE DR12-2S



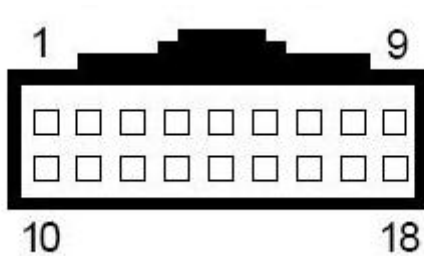
Connector UBA-1x, WBA-2x (when looking at bill acceptor):



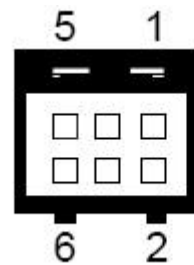
Connector EBA-3x (when looking at bill acceptor):



Connector MSM/MVU Series (when looking at bill acceptor):



Interface

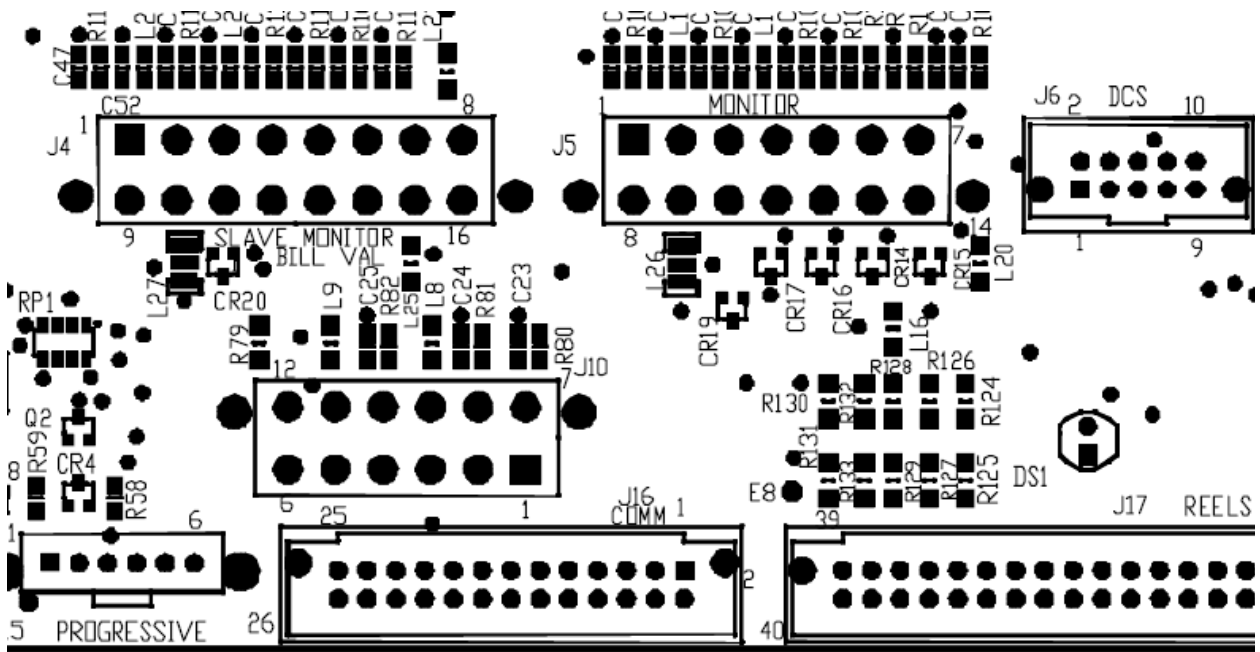


Power

Connector COM0 used for host gaming machine

| Connector COM0: | Connector J 10 on IGT Mother Board |
|--|------------------------------------|
| 1 +12V | 1 |
| 2 GND | 2, 11 |
| 3 TX to HOST | 8 |
| 4 RX from HOST | 10 |
| NOTE: connect together 5 and 6 pins of IGT (J 10) connector | |

IGT Mother Board layout (fragment):



After connecting the bill acceptor to the IGT host machine using converter board IGT will show error: **Bill Validator CRC Mismatch**. Clear this error using test menu.